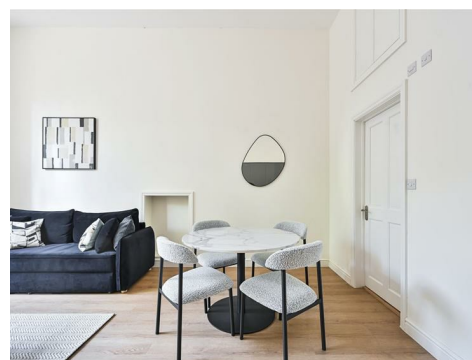
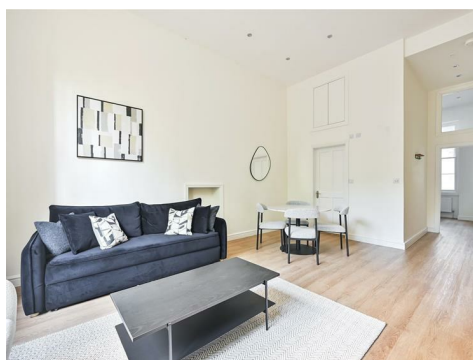


Ennismore Gardens, SW7 1NH

£5,000pcm



This beautifully refurbished one-bedroom apartment is situated on the raised ground floor of an elegant period building, boasting impressive high ceilings and floor-to-ceiling windows that flood the space with natural light.

The property features a spacious open-plan living and dining area with a brand-new, fully fitted kitchen, ideal for both relaxing and entertaining. The double bedroom is generously sized, and the contemporary bathroom is finished to a high standard. Wood flooring runs throughout, adding to the sleek and modern feel of the apartment.

Located just a short stroll from Hyde Park, Sloane Street, and the luxury shops of Knightsbridge, the apartment offers exceptional access to some of London's best attractions. Transport links are excellent, with Knightsbridge (Piccadilly Line) and South Kensington (Piccadilly, District & Circle Lines) stations nearby.

This stunning flat is ideal for professionals or couples seeking a comfortable and stylish short-term home in one of London's most prestigious neighbourhoods.

These particulars have been prepared for prospective purchasers for guidance only. They are not part of an offer or contract. Whilst some descriptions are obviously subjective and information is given in good faith, they should not be relied upon as statements or representative of fact.

